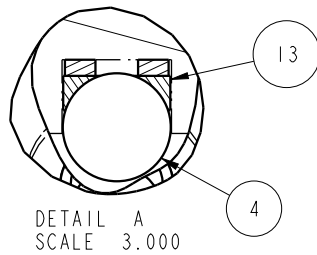
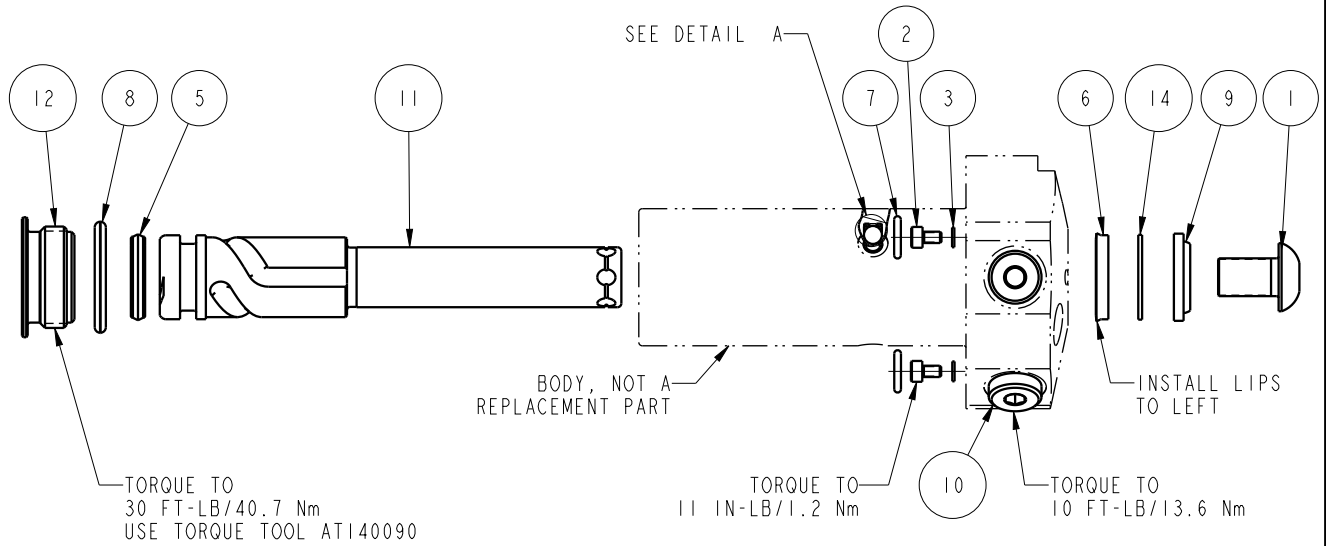



NO	QTY	PART NO	DESCRIPTION	STD SEAL KIT	FKM SEAL KIT
1	1	21500009	SCREW, CAP, BTNH, M10 X 16, ALY		
2	2	21500018	SCREW, CAP, SOCH, M3 X 5, ALY		
3	2	21500200	WASHER		
4	3	23600011	BALL, STEEL, ALLOY, .187	X	X
5	1	39010018	SEAL,CROWN,11/16x7/8x5/32	X	39V10018
6	1	39010020	SEAL,BEVEL WHEEL INSERT,5/8 x 1/8 x 7/8	X	39V10020
7	2	39050042	O-RING, (-011)	X	39051025
8	1	39051031	O-RING, (-912)	X	X
9	1	39053001	WIPER,SNAP-IN, (5/8)	X	X
10	2	43068004	PLUG, SOCH, G1/8		
11	1	47510914	PLUNGER,SC,HS,4.9KN,RH,LS		
12	1	81400029	RETAINER,SC,HS,1100		
13	3	90199957	ASSY,BALLSEAT,SC,1100	X	X
14	1	39F54001	BU RING,(-208 CUSTOM)	X	X
N/A	N/A	60414502	KIT, SEAL, STANDARD		
N/A	N/A	6V414502	KIT, SEAL, FKM		



PARTS LIST	 VEKTEK VEKTEK, INC. 1334 E. SIXTH AVE. P.O. BOX 625 EMPORIA, KS. 66801 U.S.A.
	ASSEMBLIES AFFECTED 41460523
PARTS LIST, ASSY, SC, TF, TC, 4.9KN, DA, RH, LS	SIZE A MPLV1413
DATE: 11/30/11	REV C

C	5279	RELEASE	ALS	4/25/24
REV	IN ACCORDANCE WITH ECN	EFFECTIVE DATE	REVISED BY	DATE
DRW BY:	DRAWING STATUS: Released			
DATE:	PRODUCTION APPROVED FOR RELEASED STATUS ONLY			

FORM FEG035_PL_ASIZE, REV. B

SHEET 1 OF 1